

Corner Blocks

Corner blocks are traditionally used at the top corners of doors, both for their decorative value, and to simplify casing installation. Corner blocks may also be used at the corners of windows or to provide an ending point for chair rail moulding when installed to interrupt door or window casings at chair rail height.



Corner Blocks

HYDE PARK

HYDE PARK FINE ART OF MOULDINGS, INC.

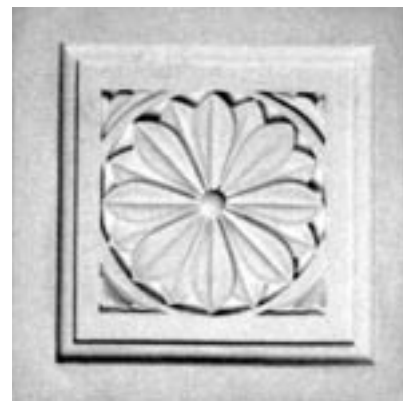
CB551

Height: 3"
Width: 3"
Depth: 1/2"



CB554

Height: 6"
Width: 6"
Depth: 1 1/4"



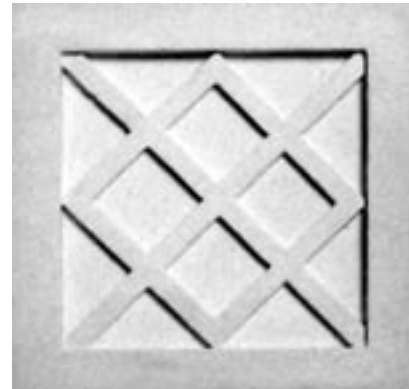
CB552

Height: 5"
Width: 5 1/8"
Depth: 1 3/4"



CB555

Height: 6"
Width: 6"
Depth: 7/8"



CB553

Height: 4 7/8"
Width: 4 7/8"
Depth: 1 1/4"



CB556

Height: 8"
Width: 8"
Depth: 1"



Corner Blocks

HYDE PARK

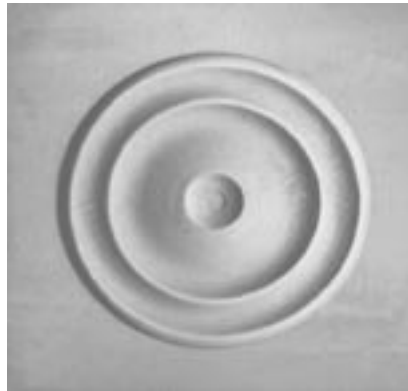
HYDE PARK FINE ART OF MOULDINGS, INC.

CB557

Height: 4 1/2"

Width: 4 1/2"

Depth: 1 1/2"

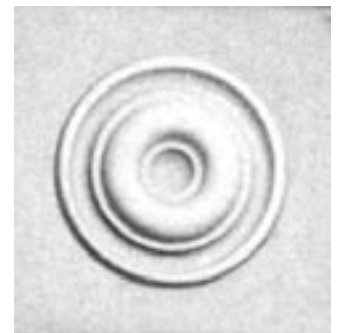


CB560

Height: 3 1/2"

Width: 3 1/2"

Depth: 7/8"

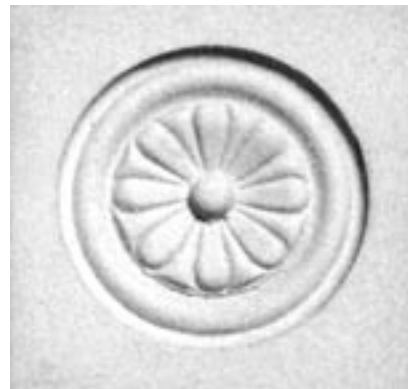


CB558

Height: 4 1/2"

Width: 4 1/2"

Depth: 7/8"



CB561

Height: 3 7/8"

Width: 3 7/8"

Depth: 1 1/2"



CB559

Height: 4 7/8"

Width: 4 7/8"

Depth: 1 1/2"



CB562

Height: 6"

Width: 6"

Depth: 3/4"



Corner Blocks

HYDE PARK

HYDE PARK FINE ART OF MOULDINGS, INC.

CB563

Height: $4 \frac{3}{8}$ "
Width: $4 \frac{3}{8}$ "
Depth: $1 \frac{3}{4}$ "



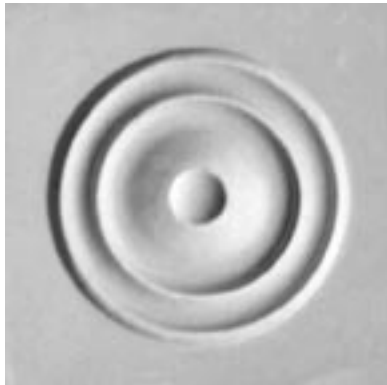
CB566

Height: $4 \frac{1}{2}$ "
Width: $4 \frac{1}{2}$ "
Depth: $1 \frac{1}{8}$ "



CB564

Height: $4 \frac{3}{8}$ "
Width: $4 \frac{3}{8}$ "
Depth: $\frac{7}{8}$ "



CB567

Height: $7 \frac{5}{8}$ "
Width: $7 \frac{5}{8}$ "
Depth: $2 \frac{3}{4}$ "



CB565

Height: $4 \frac{7}{8}$ "
Width: $4 \frac{7}{8}$ "
Depth: $1 \frac{1}{8}$ "



CB568

Height: $2 \frac{3}{4}$ "
Width: $2 \frac{3}{4}$ "
Depth: 1"



Corner Blocks

HYDE PARK

HYDE PARK FINE ART OF MOULDINGS, INC.

CB569

Height: $2 \frac{1}{2}$ "

Width: $2 \frac{1}{2}$ "

Depth: $\frac{5}{8}$ "



CB571-A

Height: $6 \frac{3}{4}$ "

Width: $6 \frac{3}{4}$ "

Depth: $\frac{3}{8}$ "

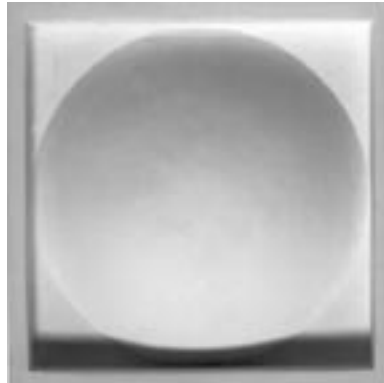


CB570

Height: 6"

Width: 6"

Depth: $1 \frac{1}{4}$ "



CB572

Height: $3 \frac{1}{4}$ "

Width: $3 \frac{1}{4}$ "

Depth: $1 \frac{1}{16}$ "



CB571

Height: $4 \frac{3}{4}$ "

Width: $4 \frac{3}{4}$ "

Depth: $\frac{7}{8}$ "



CB572-A

Height: 4"

Width: 4"

Depth: $\frac{5}{16}$ "



Corner Blocks

HYDE PARK

HYDE PARK FINE ART OF MOULDINGS, INC.

CB573

Height: 8 1/4"

Width: 8 1/4"

Depth: 1 1/2"

